



do not remove card from aircraft | S.U.P. laisser cette carte eurocopter as350B2



Cabin Safety
Sécurité à Bord

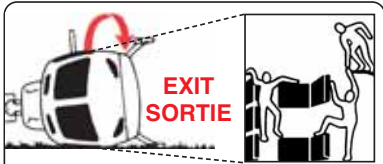
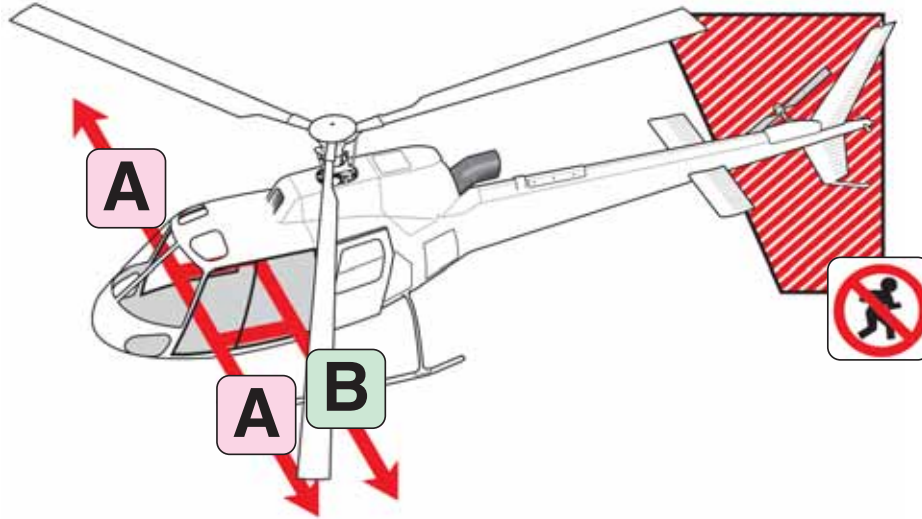
REF. AS3-703-136-02-11
U.S. COPYRIGHT VA 491-348
CANADA COPYRIGHTS 474341 & 1075484



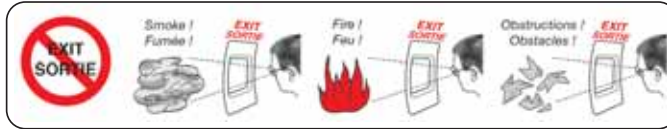
EXIT SORTIE



Copyright © '92, '98, '06, 2010 Cabin Safety International Ltd.
Tel: (403) 697-1500 email: sales@cabinsafety.com
www.cabinsafety.com



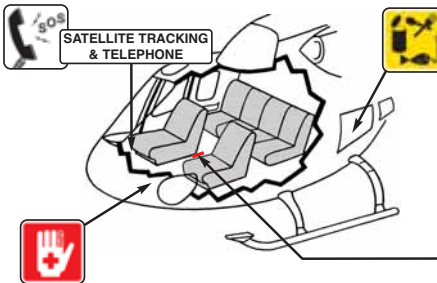
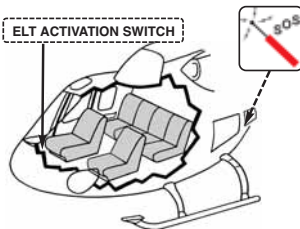
AIRCRAFT ON SIDE
AÉRONEF CAPOTÉ



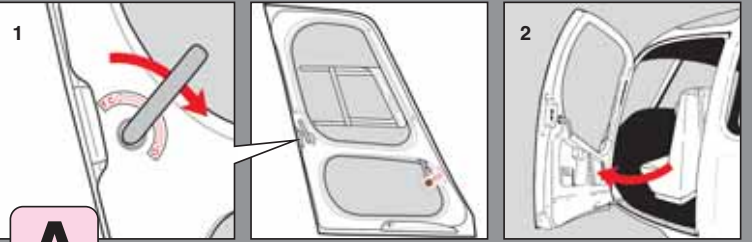
The **ELT** is a transmitting device to aid in the location of downed aircraft and survivors in remote areas. The device emits a signal that can be detected by satellite, civilian aircraft and military search-and-rescue vessels.

Le **ELT** a été mis au point pour aider les équipes de sauvetage à repérer les aéronefs écrasés, et à sauver les survivants. Ce dispositif émet un signal et peut être facilement détecté par des satellites, des avions de ligne ou des avions militaires.

ELT ACTIVATION SWITCH

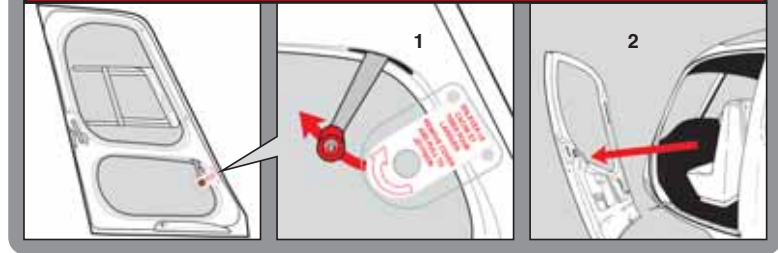


SATELLITE TRACKING & TELEPHONE



A

EMERGENCY JETTISON
LARGAGE D'URGENCE



B

